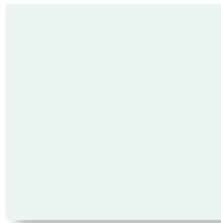




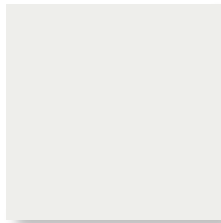
Your Roof. For Life!
On Time and Complete!™

Residential/Post Frame Color Chart

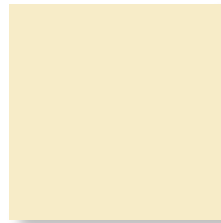
- SMP[✓] Paint System
- 29 & 26 Gauge Galvalume® Steel Substrate
- 45-Year Industry Leading, Written Warranty on Painted Products with No Coastal Set Back



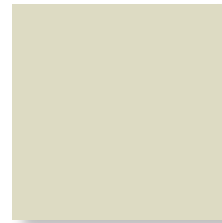
Arctic White*
TSR† = 63%



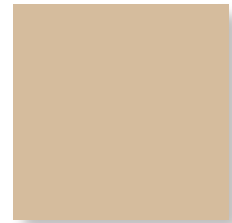
White
TSR = 46%



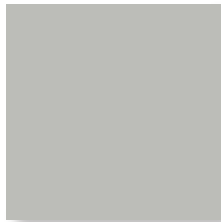
Ivory
TSR = 58%



Light Stone
TSR = 51%



Sahara Tan
TSR = 36%



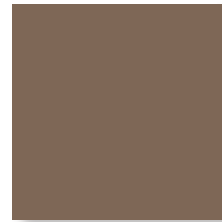
Pearl Gray
TSR = 35%



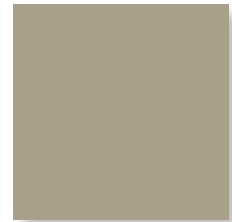
Cocoa Brown
TSR = 29%



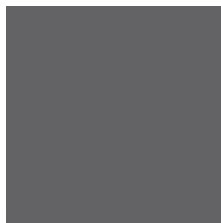
Burnished Slate
TSR = 32%



Light Brown
TSR = 36%



Clay
TSR = 32%



Charcoal Gray
TSR = 31%



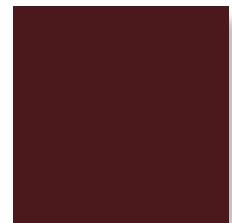
Black
TSR = 25%



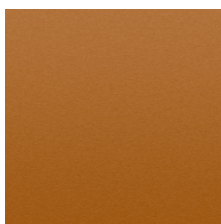
Patriot Red
TSR = 36%



Barn Red
TSR = 32%



Burgundy
TSR = 25%



Copper Metallic †
TSR = 46%



Gallery Blue
TSR = 25%



Royal Blue
TSR = 31%



Evergreen
TSR = 26%



Marine Green
TSR = 30%

Non-Painted



Acrylic Coated Galvalume
TSR = 55%



Denotes Energy Star™ certified high reflectance color which can reduce cooling costs.

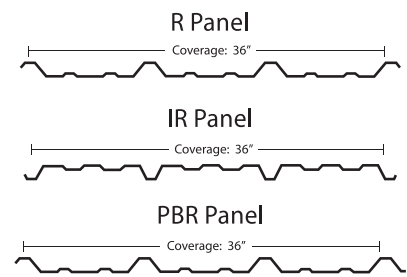
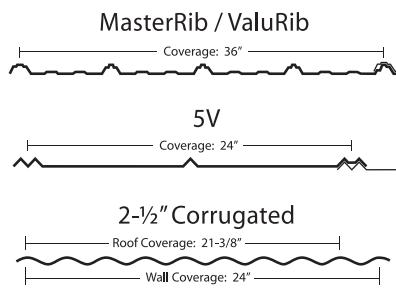
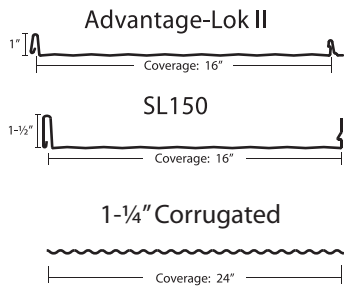


Union utilizes the most advanced Siliconized Modified Polyester paint system in the industry, based on Akzo Nobel's Ceram-A-Star 1050 technology.

Note: Colors shown have been matched as accurately as possible to actual finish. For exact color match, please request a metal color sample. Availability of colors and materials is subject to change. Most panels are available in bare galvanized or bare galvalume.

† TSR = Total Solar Reflectance. An Energy Star™ certified color must meet the following TSR requirements: 25% initial, 15% after 3 years of exposure testing.

‡ Premium color. To ensure proper color match, orders for metallic colors should be placed so that they come from the same batch.



PANEL	GAUGE	COLOR																				
		Arctic White*	Barn Red	Black	Burgundy	Burnished Slate	Charcoal Grey	Clay	Cocoa Brown	Copper Metallic	Evergreen	Gallery Blue	Ivory	Light Brown	Light Stone	Marine Green	Patriot Red	Pearl Gray	Royal Blue	Sahara Tan	White	Acrylic Coated Galvalume
Advantage Lok II	26	•	•	•	•	•	•	•	•	•	•	•	•	•	•	•	•	•	•	•	•	•
SL150	26	•	•	•	•	•	•	•	•	•	•	•	•	•	•	•	•	•	•	•	•	•
MasterRib	29	•	•	•	•	•	•	•	•	•	•	•	•	•	•	•	•	•	•	•	•	•
MasterRib	26	•	•	•	•	•	•	•	•	•	•	•	•	•	•	•	•	•	•	•	•	•
^s ValuRib	29	•																				
5V	29		•																		•	•
5V	26	•				•									•	•					•	•
1-1/4" Corrugated	29																					•
2-1/2" Corrugated	29		•																			•
2-1/2" Corrugated	26	•														•	•					•
R Panel	26	•	•		•	•	•		•		•	•	•		•	•	•	•	•	•	•	•
IR Panel	26	•	•		•	•	•		•	•	•	•		•	•	•	•	•	•	•	•	•
PBR Panel	26		•			•	•		•		•			•	•			•	•	•	•	•

*ValuRib is only offered in Arctic White at the following locations: Yukon, Janesville, Dayton and Scranton. Please see a Union Sales Representative for additional information.

^sValuRib colors are not Energy Star certified. Copper is a metallic paint with higher cost than SMP.

PERFORMANCE DATA

COLOR	INITIAL SOLAR REFLECTANCE	3YR. TOTAL SOLAR REFLECTANCE	INITIAL THERMAL EMITTANCE	SOLAR REFLECTANCE INDEX
Arctic White	0.65	0.63	0.87	78
Barn Red	0.32	0.32	0.87	33
Black	0.25	0.25	0.85	24
Burgundy	0.25	0.25	0.87	24
Burnished Slate	0.31	0.32	0.88	32
Charcoal Gray	0.30	0.31	0.88	31
Clay	0.33	0.32	0.87	35
Cocoa Brown	0.28	0.29	0.89	29
Copper Metallic	0.46	0.46	0.86	52
Evergreen	0.26	0.26	0.88	26
Gallery Blue	0.25	0.25	0.87	24
Ivory	0.60	0.58	0.87	71
Light Brown	0.35	0.36	0.88	38
Light Stone	0.52	0.51	0.87	60
Marine Green	0.30	0.30	0.87	31
Patriot Red	0.35	0.36	0.88	38
Pearl Gray	0.37	0.35	0.87	40
Royal Bue	0.30	0.31	0.87	31
Sahara Tan	0.36	0.36	0.87	39
White	0.56	0.46	0.87	66
Acrylic Coated Galvalume	0.67	0.55	0.14	56

ENERGY STAR Requirements

Initial Solar Reflectivity
 Steep Slope Roofs (>2:12) ≥ 0.25
 Low Slope Roofs (≤2:12) ≥ 0.65
 3 Year Solar Reflectivity
 Steep Slope Roofs (>2:12) = 0.15
 Low Slope Roofs (≤2:12) = 0.50

LEED 2.2 Requirements

Solar Reflectance Index (SRI)
 Steep Slope Roofs = ≥29
 Low Slope Roofs = ≥78

Note: Colors shown have been matched as accurately as possible to actual finish. For exact color match, please request a metal color sample. Availability of colors and materials is subject to change. Most panels are available in bare galvanized or bare galvalume.

Plant Locations:

Corporate Headquarters**

701 S. King St.
 Fayetteville, NC 28301
 888-685-7663

Vicksburg, MS

1463 Interplex Circle
 Ceres Industrial Complex
 Vicksburg, MS 39183
 888-661-0577

Morrison, TN**

7747 Manchester Hwy.
 Morrison, TN 37357
 931-668-4393

Dayton, OH

625 N. Third St.
 Tipp City, OH 45371
 877-615-9812

Tifton, GA

3365 US Hwy 41 S.
 Tifton, GA 31794
 800-962-9131

Oklahoma City, OK*

600 N. Sara Rd. Ste B
 Yukon, OK 73099
 866-373-5286

Orange, VA

12435 James Madison Hwy.
 Orange, VA 22690
 800-762-6785

Scranton, PA*

100 Keystone Industrial
 Park Road
 Suite 2B
 Dunmore, PA 18512
 866-695-6455

Ocala, FL**

490 Oak Rd.
 Ocala, FL 34472
 800-331-3584

Janesville, WI*

3920 Kennedy Rd.
 Janesville, WI 53545
 608-563-3226